



Anubhav
techno solutions

ISO 9001 : 2015 CERTIFIED



MISSION

Our mission is to provide high-quality electrical and automation services, as well as top-quality industrial products, while building strong and long-lasting relationships with our clients. We strive to deliver exceptional customer service, innovative solutions, and expert advice to help our clients achieve their goals.



VISION

Our vision is to make a global impact through our innovative approach to electrical and automation services. We aim to provide affordable solutions by partnering with individuals and companies who share our passion for quality, innovation, and customer satisfaction, and create a positive impact on the world.



VALUES

- Teamwork :** We believe in the power of collaboration, and work together to achieve our goals and deliver outstanding results.
- Integrity :** We always act with honesty and transparency, maintaining the highest ethical standards in everything we do.
- Innovation :** We continuously seek new and innovative ways to improve our services and products, and stay ahead of industry trends.
- Quality :** We believe in best quality and timely delivery.
- Excellence :** We aim for excellence in everything we do, and are dedicated to continuous improvement and professional development.

JOURNEY MAP



2017 Started Anubhav Techno Solution (Repair and Service of VFD and Cards & Trading of Process Instruments)

2018 Appointed a Authorised Channel Partner of L&T Electrical and Automation

2019 Appointed Authorised channel partner of Phoenix contact, Started Low Voltage Electrical panel Manufacturing with Electrical Contracting

2020 Company has been incorporated in Pvt Ltd

2021 Appointed as Havells Authorised Distributor

2022 Appointed as a Unika Special cable & Finolex Authorised channel Partner

2023 Appointed as Legrand Authorised Distributor

2024 Appointed BCH Authorised Channel Partner Started Own Branded VFD Manufacturing

OUR MANUFACTURING



PCC



MCC



IMCC



APFC



HMI PANEL



PDB



VFD PANEL



DB PANEL



PLC PANEL

- ◆ PCC, MCC, IMCC, APFC, PDB, VFD Panel
- ◆ Panel Protection IP 46, IP 47, IP 55, IP 56
- ◆ S.S Panel Making (S.S 304, S.S 316)
- ◆ CPRI Approved Lv Switchboards & Busducts
- ◆ CE Marked Panel Customized Solution
- ◆ Authorised System Integrator For IEC-61439 Switch Board of BCH India

Routine Test

- ◆ Inspection of Assembly Including Wiring Continuity Test
- ◆ Insulation Resistance Test (Megger) 1000V DC
- ◆ High Voltage Test by H V Tester 2.5 KV for 1 Min.

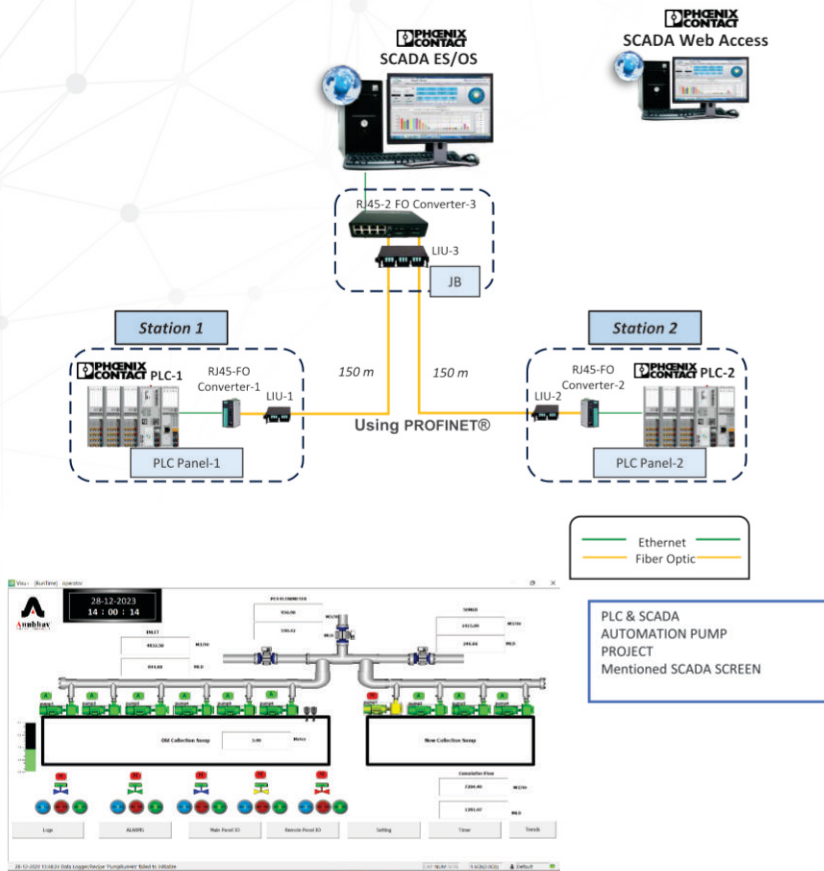
Type Test

- ◆ Short Circuit Test of 65 KA for 1 Sec upto 5000 A. CERTIFIED BY CPRI BHOPAL
- ◆ Temperature Rise Test as per IS 8623 (Part I) 8.2.1-1993. CERTIFIED BY CPRI BHOPAL
- ◆ Panel Enclosure Protection Level IP 55 Certificate.

Special Test

- ◆ Primary Injection Test
- ◆ Heat Run Test

Architecture for WTP Pump Automation



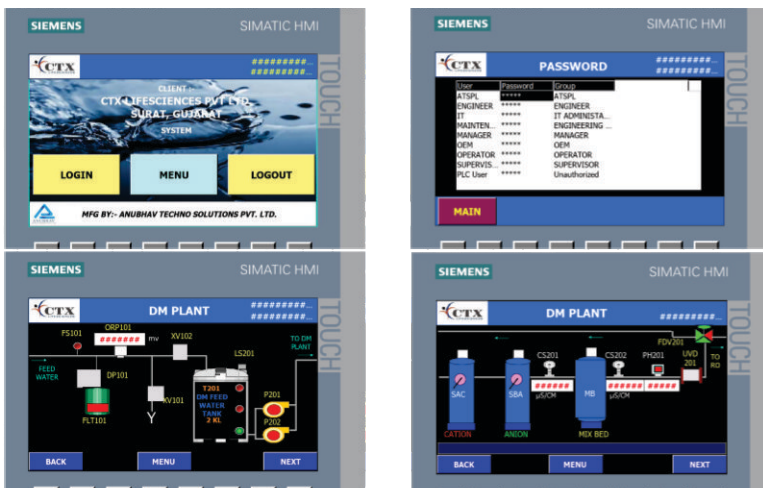
WORKING

We are taking pride in the successful implementation of an advanced and fully automated pumping system featuring 10 pumps. This cutting-edge system operates seamlessly through SCADA (Supervisory Control and Data Acquisition), ensuring efficient and precise control over the entire pumping process.

- Function points
- Flow
- Level
- Pump Level Set Point For Auto On/Off
- Trip Indication
- Flow level, Pump hours ,Alarms
- SCADA Web Accesses (Monitoring):

HMI Modification in Siemens KTP 700 Basic for a Pharma Company:

HMI SCREEN



Certainly! Modifying an HMI (Human Machine Interface) in a pharmaceutical company, especially in compliance with regulations like 21 CFR Part 11 and following the qualification procedures (IQ, OQ, PQ, DQ) is a critical task. Below is a general outline of the steps involved in HMI modification on a Siemens KTP 700 Basic for a pharmaceutical company.

- Define User Access Levels
- Security Password Policy
- HMI Screen Modification
- 21 CFR Part 11 Compliance
- Qualification Procedures (IQ, OQ, PQ, DQ)
- Documentation
- Training
- Continuous Monitoring and Improvement

OUR VARIABLE FREQUENCY DRIVE

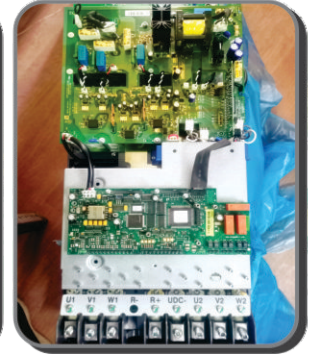
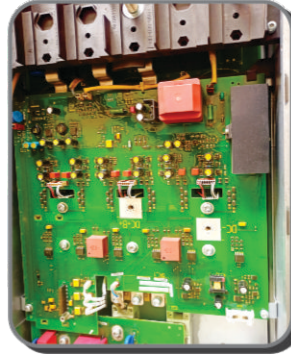
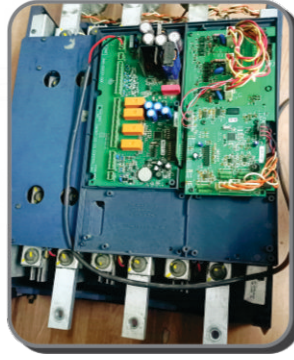
ATS-100



Technical Features

I/O Features	Input Voltage Range	380/220V±15%
	Input Frequency Range	47~63Hz
	Output Voltage Range	0~rated input voltage
	Output Frequency Range	0~400Hz
I/O Terminals	Input Terminals	programmable DI:7, 1 high speed pulse; programmable AI:2, AI1: -10V~10V; AI2: 0~10V or 0~20mA;
	Output Terminals	programmable open collector output:1(open collector or high speed pulse output selectable); programmable relay output:2 programmable AO:2, 0/4 ~ 20mA or 0 ~ 10V selectable.
	Communication Terminals	provide RS485 communication interface, adopt Modbus-RTU communication mode.
Control Function	Control Mode	V/F control, sensorless vector control (SVC)
	Speed Adjusting Range	1:100(SVC)
	Overload Capacity	150% rated current 60s, 180% rated current 10s .
	Frequency Reference Source	Keypad, analog input, HDI, serial communication, multi-step speed, simple PLC and PID. The combination of multi- modes and the switch between different modes can be realized.
	Other Functions	<ul style="list-style-type: none"> • Traverse Control Function • PID Control Function • Simple PLC, Multi-Steps Speed Control Function: 16 steps speed can be set. • None-Stop when instantaneous power off. • Speed Trace Function: Smoothly start the running motor. • Automatic Voltage Regulation Function (AVR): • Up to 23 fault protections: over current, over voltage, under voltage, over temperature, phase failure, overload etc.
	Man-machine Interface	LED Display
EMC	Multi-function Key-press	The QUICK/JOG key-press can be used as multi-function key-press.
	EMC Criterion	if the installing and wiring of the inverter together with the EMI filter according to 《Manual of ATS 100》, we can promise it's must meet the following criterion: <ul style="list-style-type: none"> • EN61000-6-4 • EN61800-3 [Normally, if the cable of motor is longer than 50m, it's should install AC reactor or sinusoidal filter at the output side of the inverter.]
Environmental Constraint	Temperature	-10°C ~ +40°C. Inverter will be derated if ambient temperature exceeds 40°C.
	Humidity	≤90%, without condensation
	Altitude	≤1000M, output rated power >1000M, output power with derating
	Impingement and Oscillation	The inverter is prohibited to drop on the floor or with suddenly impact, it also prohibited to be installed at the place where the oscillation may occur very probably.
	Electromagnetic Radiation	The inverter is prohibited to be installed at the place where stronger electromagnetic radiation may occur very probably.
	Store Environment	The inverter is prohibited to be stored at the place where with direct sunlight, fall of oil mist, steam and with heavy oscillation.

SERVICES



REPAIR & MAINTENANCE

- REPAIRING OF VFD, SOFTSTARTER & ALL AUTOMATION PRODUCT
- ANY ELECTRONICS CARD LEVEL REPAIRING
- AUTOMATION SERVICES LIKE PROGRAM DEVELOPMENT, HMI DEVELOPMENT, SOFTWARE DEVELOPMENT & MODIFICATION ON VARIOUS AUTOMATION SYSTEM LIKE PHOENIX, L&t, SIEMENS, ROCKWELL, DELTA, ABB & SCHNEIDER
- REFURBISHMENT OF ELECTRICAL PANEL

ANNUAL MAINTENANCE CONTRACT

- AMC OF VFDs.
- BREAKER SERVICES
- HMIs
- ELECTRICAL PANEL

SOLAR & EPC PROJECTS

- AC Works
- DC Works
- MMS Installation
- Transformer Installation
- Panel Erection & Commissioning
- ICOG Commissioning
- Cable Laying & Installation
- Crane Electrical Commissioning Work





Automate

Automation software | Cloud computing | Edge computing | HMIs and IPCs
Industrial communication | PLCs (controllers) and I/Os

Switch, Measure And Monitor

Energy monitoring | I/O signal marshalling | Motor, machine, and system monitoring
Motor starters and electronic switching devices | Process indicators and field devices
Relays and optocouplers | Safety relay modules and sensors | Signal conditioners and measuring transducers

Connect

Board-to-board connectors | Cables and lines | Connectors | Distribution blocks and device terminal blocks
Distributors, adapters, and conductor connectors | Electronics housings | Terminal blocks

Supply, Charge, & Protect

Charging technology for e-mobility | DC/DC converters and DC/AC inverters | Power distributors
Power supplies | Protective relays for mains protection | Redundancy modules | Surge protection
Uninterruptible power supplies (UPS)

Industrial Automation Products

Soft Starters: SUPERNOVA Series | Programmable Logic Controller
Human Machine Interface | Servo Motors & Drives: M5 Series
x2000 Series AC Drives | AHF | ENERGY MONITORING SYSTEM
Industrial SCADA



L&T Electrical & Automation

Industrial Products



BCH
ELECTRIC
LIMITED

Power Control

Ultra Power Air Circuit Breakers | MCCB X - Range | MCCB | MCB Distribution Box
Air Circuit Breakers - ACB (Terasaki) | Moulded Case Circuit Breakers - MCCB (Terasaki)
RCCB (Residual Current Circuit Breaker) | MCB | SDF

Motor Control Products

Mini Contactors | Contactor | Special Purpose Contactors | Control Relay & Accessories | DC Contactors
Overload Relay | MPCB - Motor Protection Circuit Breaker | Solid State Relay

Other Industrial Products

Control and Signalling Devices | Foot Switch | AC Solenoid & AC Brakes | DC Brakes | Limit Switches | Motors
Industrial Plugs & Sockets | Pneumatic Timers Wires & Cables | Automation

Industrial Enclosure

Wall Mounted Enclosures

IP 55 Bhartia Enclosure | IP 66 Bhartia Enclosure | Bhartia Enclosures | Terminal Boxes | Stainless Steel Enclosures

Floor Mounted Enclosures

Techno Modular Enclosure | Semi Modular Enclosure | TCE Series Floor Standing Enclosure | Smart Line Enclosure
TEOS Enclosure



HAVELLS

Ht Power Cables | Lt Power Cables | Lt Control Cables | Fire Survival Cables
Heat Resistant Flame Retardant With Lifeline Plus S3 | FRLS Wires | Cctv Cables
Halogen Free FR Wires | Multicore Round Cables | Flat Submersible Cables | Solar Cables
Telecom Switch Board Cables | Catv Co Axial Cables | Lan Cables | Speaker Cables
Lightings | Fans | MCB | Distribution Board

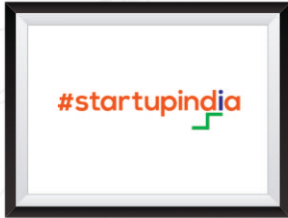
Finolex

Flame Retardant (FR) Grade (90Mtr) Gold | Flame Retardant (FR) Grade (90Mtr) Silver
Flame Retardant Low Smoke (FRLSH) | Halogen-Free Flame Retardant (HFFR) | Lan Cables

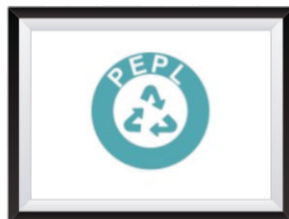


Switches : Allzy | Lyncus | Arteor | Mylinc
MCB'S : RX 3 | DX 3
UPS : Numeric

OUR REGISTRATION



OUR VALUED CUSTOMERS



:: Anubhav Techno Solutions Pvt. Ltd. ::

📍 Plot No. 329, RJD Integrated Textile Park, Ichhapore, Surat - 394510

☎ 63588 01410 | 99241 01575

✉ sales.surat@atspl.org | service.surat@atspl.org

🌐 www.anubhavtechnosolution.com